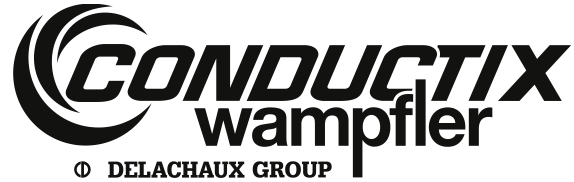


Mounting Instructions



BCB Support Profile

Program 0815

Order Number:

08-B020-7484

08-L020-0255

Contents

1	Application and Function	1
2	Mounting BCB Support Profile.....	1
3	Grounding of SEW slotted hollow conductor with SEW code strip.....	3

1 Application and Function

The BCB (code strip) support profile is used by different position strips up to a width of 35 mm. Information about the application of the adhesive tapes and operating is available in the producer documentation of the applied systems.



Adhesion at low temperatures is technically critical!

The code strips are stuck on the BCB support profile.

- Clean the profiles with silicon remover before making the strip adhesion (see producer details)
- The processing temperature is specified by the producer. It must be really noticed for the adhesion. Adhesion at low temperatures is technical not possible or rather critical

2 Mounting BCB Support Profile

- The profile is pushed in the support device of the hanger clamp for the code strip.
- A hanger clamp must be positioned at each end and must be jointed by a countersunk screw with the profile.



Risk of injury from electric shock!

Due to the isolated structure, every BCB support profile is connected to the EMS support profile by a PE grounding cable. In the event of an error, it is ensured that no error voltage is present at the BCB support profile.

Mounting Instructions

BCB Support Profile

Program 0815



NOTE!

Mount the BCB profile support incl. grounding before mounting the conductor rail!

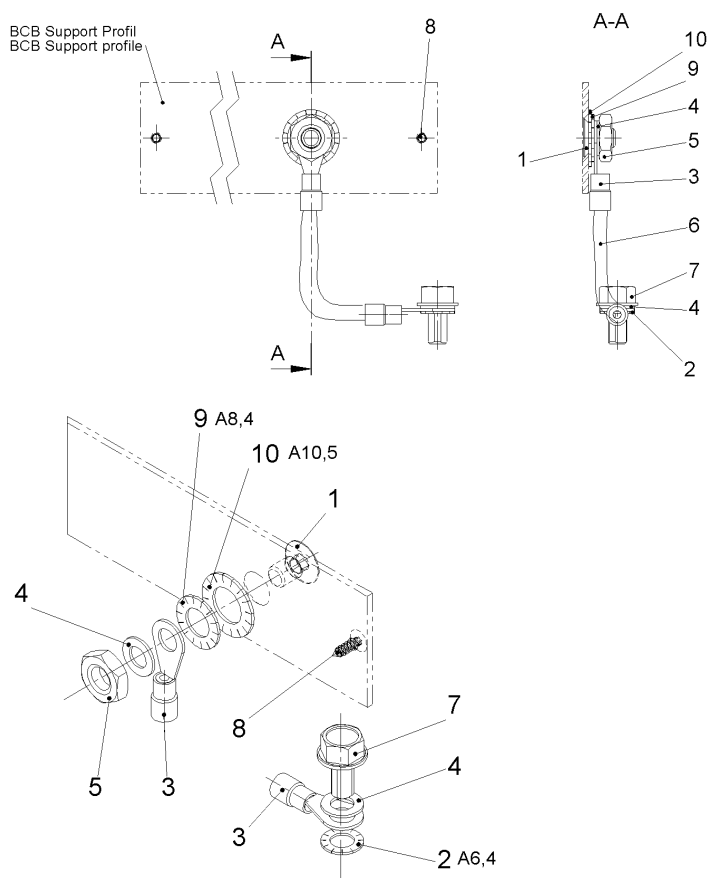


Fig. 1: Cable Set Code Band

Pos.	Description
1	Countersunk Head Screw DIN7991 M6x10-A2F
2	Star Washer
3	Cable Lug 1,5-2,5 mm ² M6
4	Detent-Edged Washer SHB-M-D6,1-Geomet
5	Hexagon Nut DIN439-M6-A2F
6	PVC-Cable H07VV-K-1x2,5-GNGE
7	Thread Forming Screw
8	Countersunk with cross Slot
9	Star Washer J8 DIN 6798A
10	Serrated Lock Washer A10,5-FD.ST

Mounting Instructions

BCB Support Profile

Program 0815

Working steps:

1. Fix additional hanger clamps at the end of the profile strip
2. Positioning and completion of the drilling (5.0 mm) for the grounding cable in the EMS track profile
3. Mount the grounding cable with the help of countersunk screw, tooth lock washer and nut (M6)
4. Click the BCB support profile into the hanger clamp



Cable lug with grounding cable must be aligned with the EMS track profile!

5. Mount the 2. end of the grounding cable with a M6 self-drilling screw in the EMS track profile at the BCB support profile
6. Check the grounding connection for low-resistance grounding connection between BCB support profile and EMS track profile



- Connect each BCB support profile over the grounding cable with the EMS track profile
- Ground the EMS track profile sufficiently
- The counter sunk drillings for the fixation of the BCB support profile and grounding will install on-site, if the BCB support profile is shorten.

3 Grounding of SEW slotted hollow conductor with SEW code strip

The cable set can also be used for the grounding of the SEW code strip track (see SEW documentation). One end is thereby installed by a M6 screw on the SEW terminal block. The 2. end is installed on the track profile as described above.

Conductix-Wampfler GmbH
Rheinstrasse 27 + 33
79576 Weil am Rhein - Maerkt
Germany

Phone: +49 (0) 7621 662-0
Fax: +49 (0) 7621 662-144
info.de@conductix.com
www.conductix.com